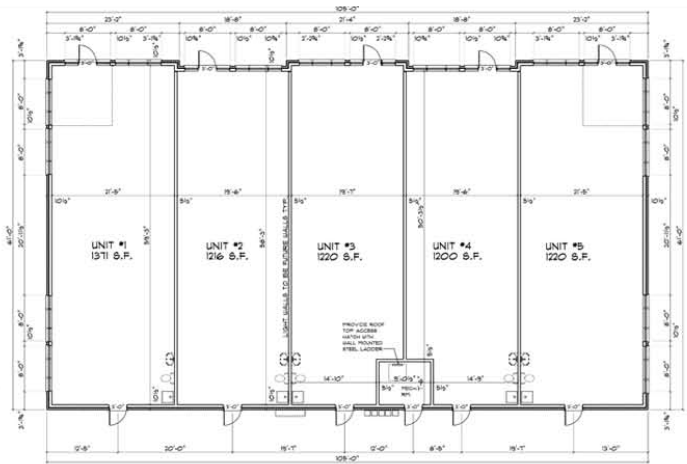
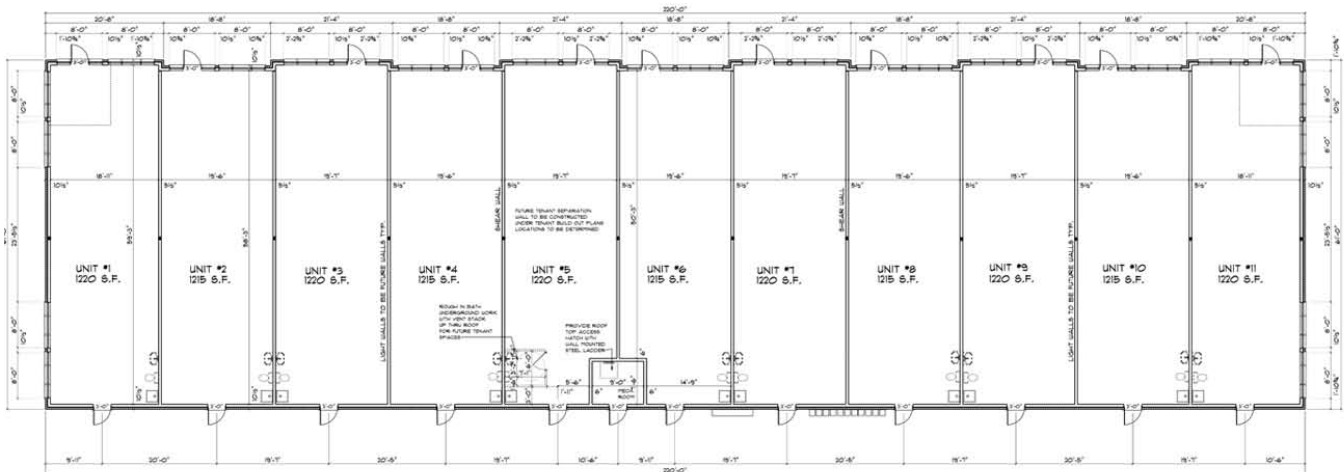


RETAIL SPACE FOR LEASE
ROUTE 83 & WASHINGTON • GRAYSLAKE, IL

\$18 per sq ft



FLOOR PLAN BUILDING 1 (ROUTE 83) LOT 5
 SCALE 1/8" = 1'-0"
 SEE ELEVATIONS FOR WINDOW SIZES
 AND LOCATIONS OF BRICK & SYNTHETIC STUCCO.



FLOOR PLAN BUILDING 2 (WASHINGTON AVE.) LOT 3
 SCALE 1/8" = 1'-0"
 SEE ELEVATIONS FOR WINDOW SIZES
 AND LOCATIONS OF BRICK & SYNTHETIC STUCCO.

NEW CONSTRUCTION RETAIL SPACE

- Frontage on Either Washington or Route 83
- Exposure at Intersection
- High Traffic Counts
- Close to Residential
- College of Lake County Nearby
- Ample Parking
- Buildout to Suit
- Units can be Combined
- Available in Late Summer



Robb Satten, Broker Manager: 847.875.8201 • Susan Peterson: 847.903.6905

Office: 847.996.1071 • Fax: 847.996.1073

rsatten@terracompanies.net • speterson@terracompanies.net

14044 Petronella Dr., Suite 1 • Libertyville, IL 60048

